

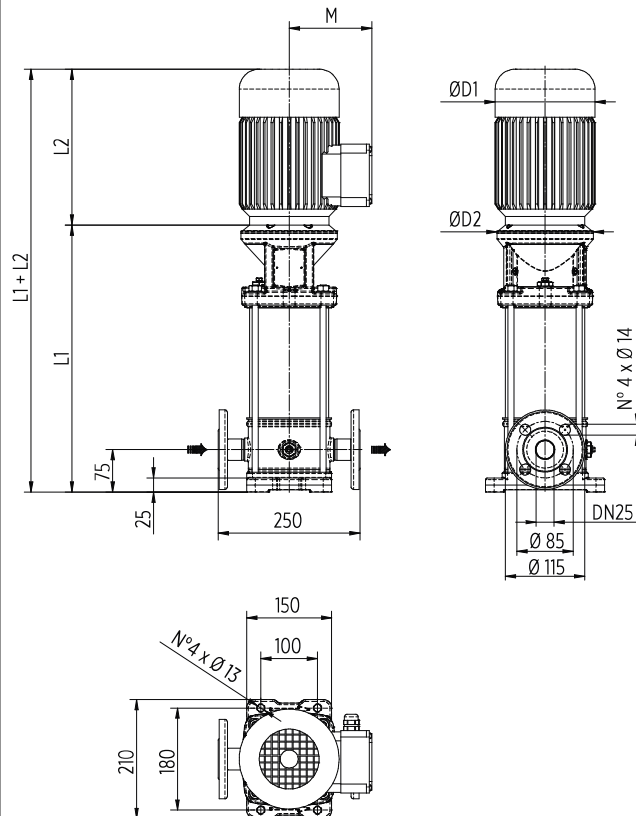
EV 3 - 50 HZ

TECHNICAL DATA

Pump Model	MOTOR		Dimensions [mm]													Weight [kg]		
			L1	L2		L3	L4	L5	M		D1		D2	L1+L2	Pump	Motor	Electric Pump	
	[kW]	Dim	F	1-PHASE	3-PHASE	T	V	C	1-PHASE	3-PHASE	1-PHASE	3-PHASE						
EV 3/2	0.37	71	313	216	216	288	288	288	134	110	139	139	170	529	11.5	5.8	17.3	
EV 3/3	0.37	71	336	216	216	311	311	311	134	110	139	139	170	552	12	5.8	17.8	
EV 3/4	0.37	71	358	216	216	333	333	333	134	110	139	139	170	574	12.5	5.8	18.3	
EV 3/5	0.55	71	381	216	216	356	356	356	134	110	139	139	170	597	13	6.2	19.2	
EV 3/6	0.55	71	403	216	216	378	378	378	134	110	139	139	170	619	13.5	6.2	19.7	
EV 3/7	0.75	80	426	232	232	401	401	401	150	129	160	160	170	658	14	9.5	23.5	
EV 3/8	0.75	80	448	232	232	423	423	423	150	129	160	160	170	680	14.5	9.5	24	
EV 3/9	0.75	80	471	232	232	446	446	446	150	129	160	160	170	703	15	9.5	24.5	
EV 3/10	1.1	80	493	232	232	468	468	468	150	129	160	160	170	725	15.5	11.1	26.6	
EV 3/11	1.1	80	516	232	232	491	491	491	150	129	160	160	170	748	16	11.1	27.1	
EV 3/12	1.1	80	538	232	232	513	513	513	150	129	160	160	170	770	16.5	11.1	27.6	
EV 3/13	1.1	80	561	232	232	536	536	536	150	129	160	160	170	793	17	11.1	28.1	
EV 3/14	1.5	90	593	267	267	568	568	568	160	138	180	180	170	860	18	14	32	
EV 3/15	1.5	90	616	267	267	591	591	591	160	138	180	180	170	883	18.5	14	32.5	
EV 3/16	1.5	90	638	267	267	613	613	613	160	138	180	180	170	905	18.5	14	32.5	
EV 3/17	1.5	90	661	267	267	636	636	636	160	138	180	180	170	928	19	14	33	
EV 3/18	2.2	90	683	267	267	658	658	658	160	138	180	180	170	950	19.5	16	35.5	
EV 3/19	2.2	90	706	267	267	681	681	681	160	138	180	180	170	973	20	16	36	
EV 3/21	2.2	90	751	267	267	726	726	726	160	138	180	180	170	1018	21	16	37	
EV 3/23	2.2	90	796	267	267	-	771	771	160	138	180	180	170	1063	22	16	38	
EV 3/25	2.2	90	841	267	267	-	816	816	160	138	180	180	170	1108	23	16	39	
EV 3/27	3	100	896	-	306	-	871	871	-	145	-	196	170	1202	24.5	22.8	47.3	
EV 3/29	3	100	941	-	306	-	916	916	-	145	-	196	170	1247	25.5	22.8	48.3	
EV 3/31	3	100	986	-	306	-	961	961	-	145	-	196	170	1292	26.5	22.8	49.3	
EV 3/33	3	100	1031	-	306	-	1006	1006	-	145	-	196	170	1337	27.5	22.8	50.3	

DIMENSIONAL DRAWINGS

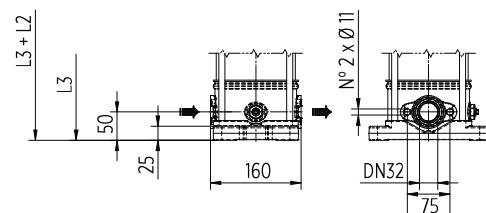
F Version



Round flanges on body type PN25: the pump is supplied without counterflanges (Optional accessories, including bolts and joints)

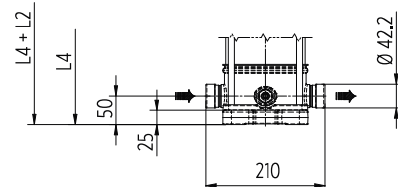
T Version

Available from EV3/2 to EV3/21



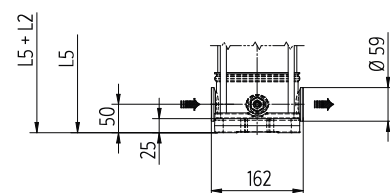
Oval flanges on body type PN16: the pump is supplied without threaded oval counter flanges (Optional accessories, including bolts and joints)

V Version



Connections with rapid fittings type "Victaulic": the pump is supplied without the collars (Optional accessories)

C Version

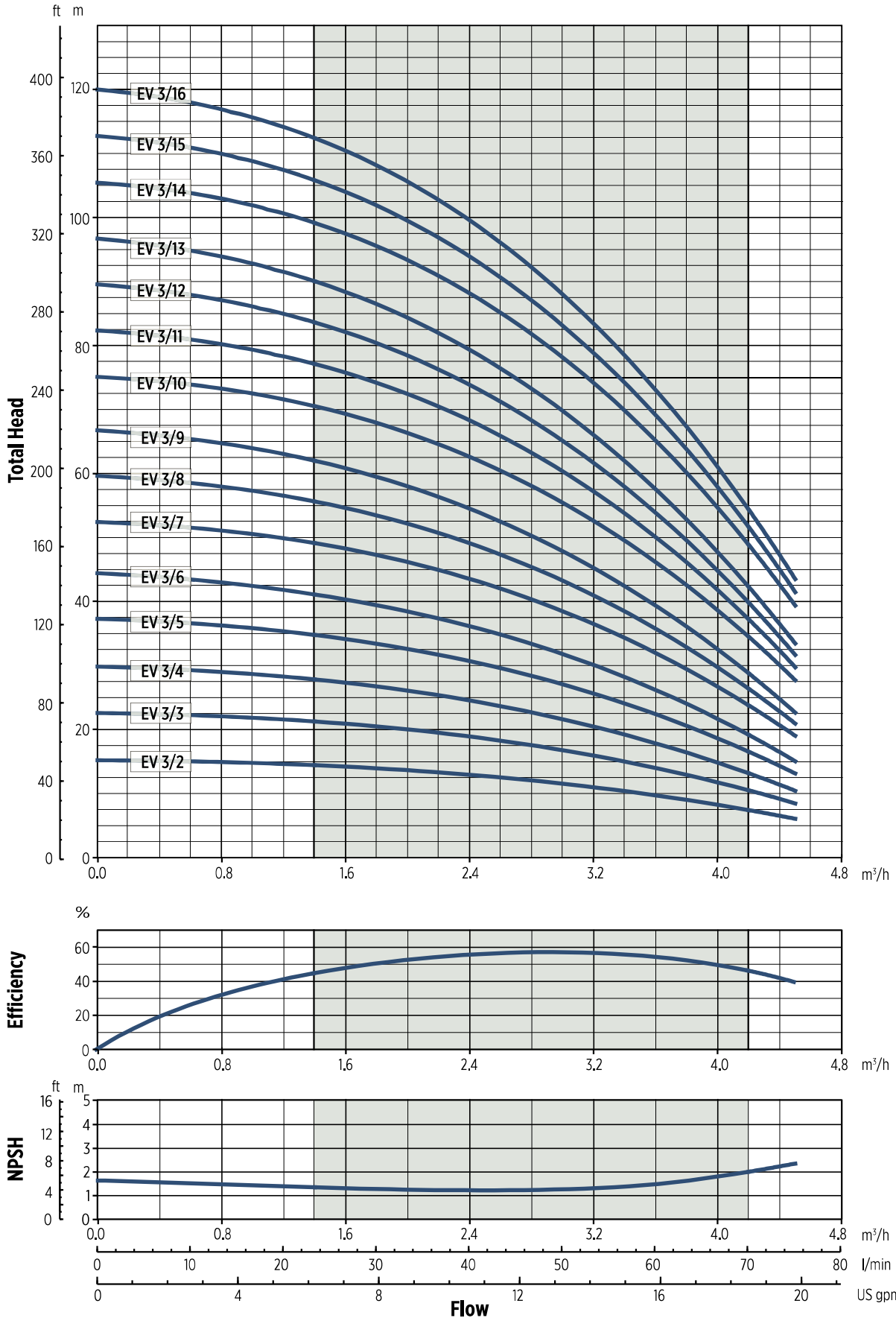


Connections with round fittings type Clamp-FlexiClamp: the pump is supplied without collars (Optional accessories)

00130095EN/02/2018

EV 3 - PERFORMANCE CURVES AT 50 HZ

MEI ≥ 0,70

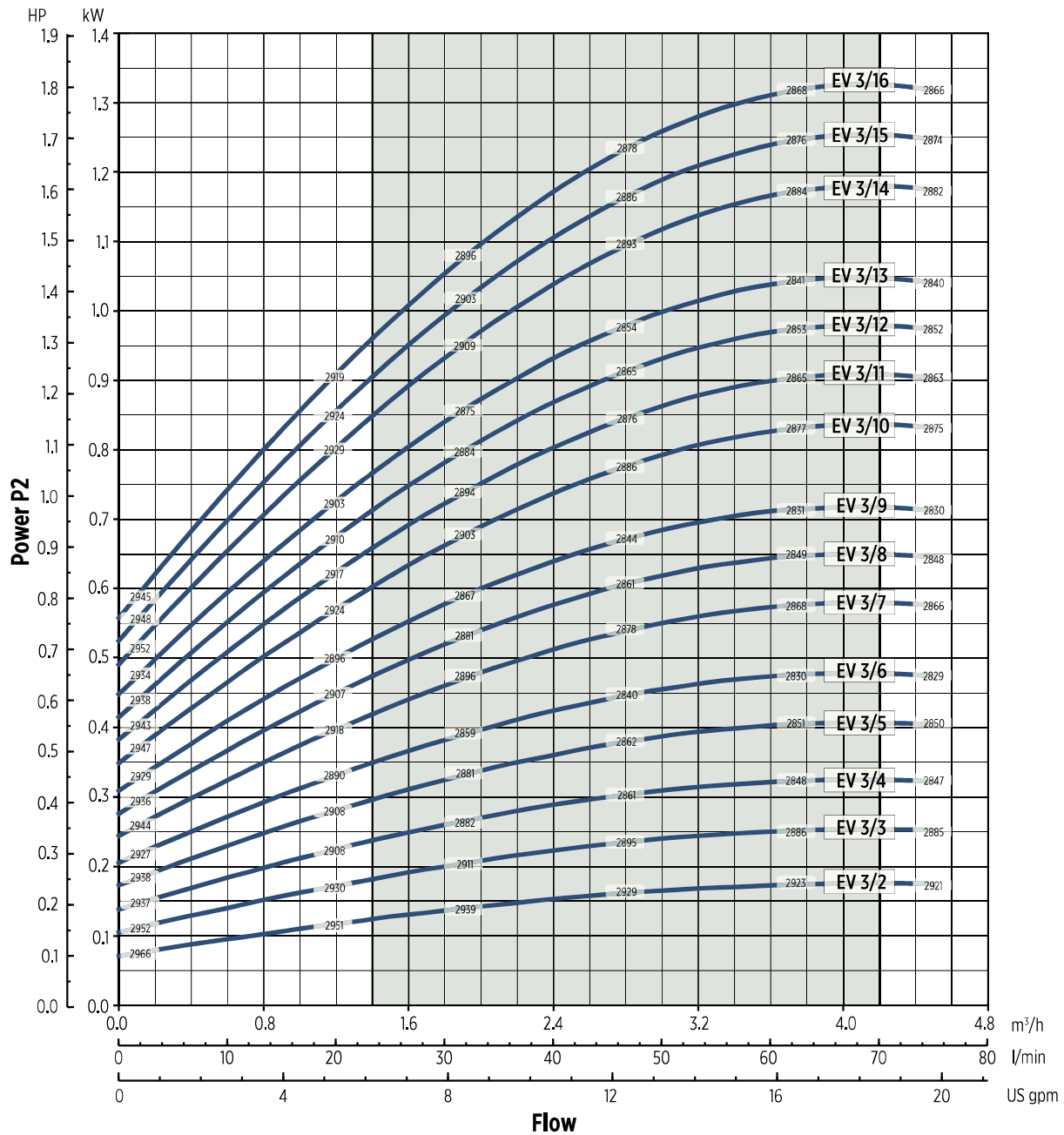


002015AEN 02/2018

The hydraulic characteristics are guaranteed, according to ISO Standard 9906:2012, grade 3B

EV 3 - PERFORMANCE CURVES AT 50 HZ

MEI ≥ 0,70



002015AEN 02/2018

Performance curves of Q, H and P depend on the rpm number according to the following formula:

$$Q_2 = Q_1 \cdot \left(\frac{n_2}{n_1}\right), \quad H_2 = H_1 \cdot \left(\frac{n_2}{n_1}\right)^2, \quad P_2 = P_1 \cdot \left(\frac{n_2}{n_1}\right)^3, \quad \eta \text{ remains approximately the same.}$$

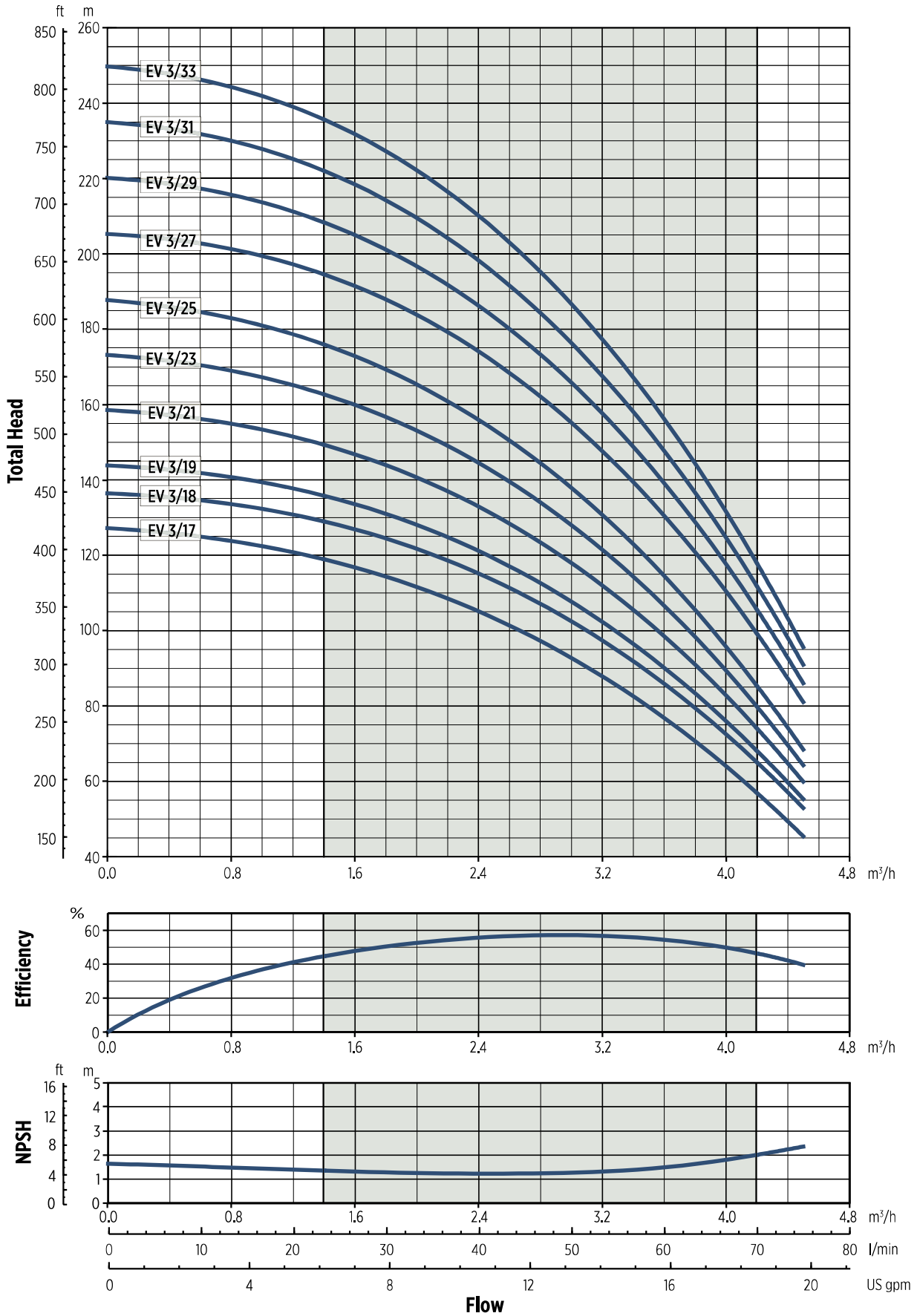
The rpm number related to the performance curves (Q-H-P) is indicated in the power chart.

Performance curves (Q-H-P) will change in case a motor with rpm number different from indicated values is used.

Q=Capacity, H=Head, P=Power, h=Efficiency

EV 3 - PERFORMANCE CURVES AT 50 HZ

MEI ≥ 0,70

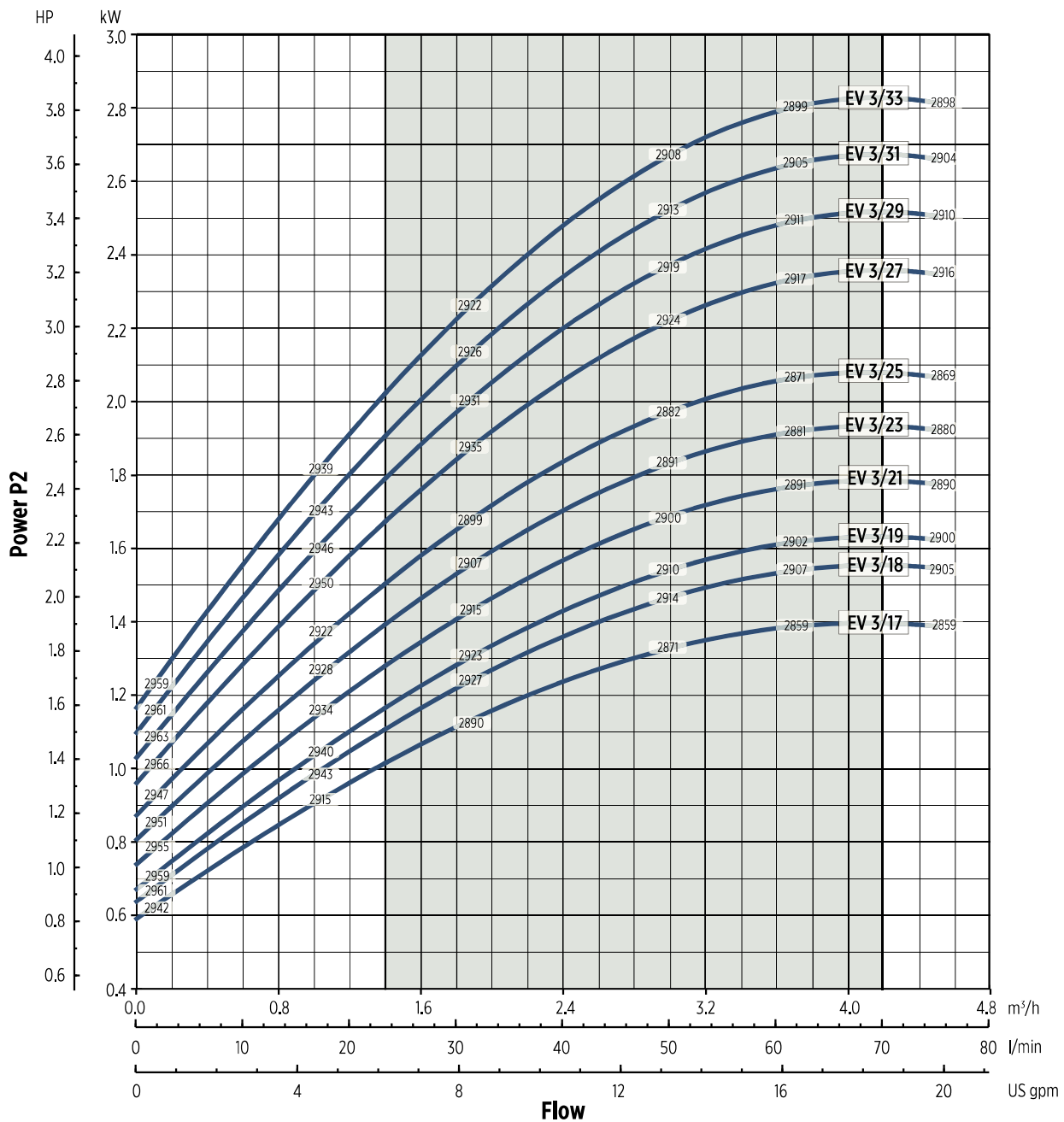


0012015BEN 02/2018

The hydraulic characteristics are guaranteed, according to ISO Standard 9906:2012, grade 3B

EV 3 - PERFORMANCE CURVES AT 50 HZ

MEI ≥ 0,70



0012015BEN.02/2018

Performance curves of Q, H and P depend on the rpm number according to the following formula:

$$Q_2 = Q_1 \cdot \left(\frac{n_2}{n_1}\right), \quad H_2 = H_1 \cdot \left(\frac{n_2}{n_1}\right)^2, \quad P_2 = P_1 \cdot \left(\frac{n_2}{n_1}\right)^3, \quad \eta \text{ remains approximately the same.}$$

The rpm number related to the performance curves (Q-H-P) is indicated in the power chart.

Performance curves (Q-H-P) will change in case a motor with rpm number different from indicated values is used.

Q=Capacity, H=Head, P=Power, η=Efficiency