

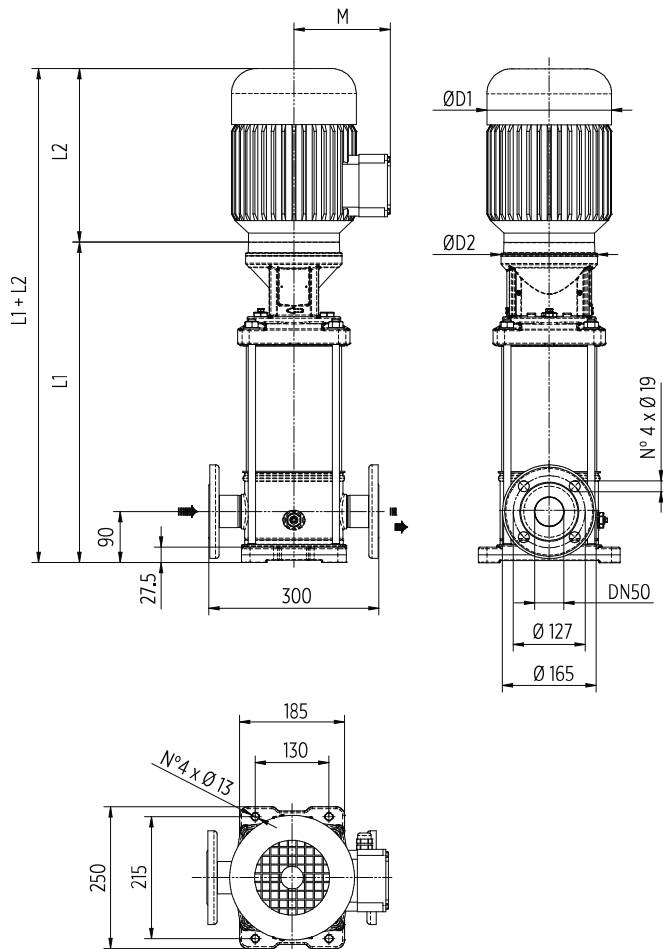
# EV 20 - 50 HZ

## TECHNICAL DATA

Pump Model	MOTOR		Dimensions [mm]											Weight [kg]			
			L1	L2		L3	L4		L5	M		D1		D2	L1+L2	Pump	Motor
	F	1-PHASE	3-PHASE	T	V	C	1-PHASE	3-PHASE	1-PHASE	3-PHASE							
EV 20/1	1.1	80	401	232	232	401	401	401	150	129	160	160	170	633	19.5	11.1	30.6
EV 20/2	2.2	90	411	267	267	411	411	411	160	138	180	180	170	678	21	16	37
EV 20/3	3	100	469	-	306	469	469	469	-	145	-	196	170	775	23	22.8	45.8
EV 20/4	4	112	517	-	306	517	517	517	-	145	-	196	170	823	24.5	26.5	51
EV 20/5	5.5	132	752	-	328	752	752	752	-	160	-	225	300	1080	46.5	33.6	80.1
EV 20/6	7.5	132	800	-	350	800	800	800	-	160	-	225	300	1150	48	36	84
EV 20/7	7.5	132	848	-	350	848	848	848	-	160	-	225	300	1198	49	36	85
EV 20/8	11	160	916	-	425	916	916	916	-	194	-	248	350	1341	53.5	59	112.5
EV 20/9	11	160	964	-	425	964	964	964	-	194	-	248	350	1389	55	59	114
EV 20/10	11	160	1012	-	425	1012	1012	1012	-	194	-	248	350	1437	56	59	115
EV 20/11	15	160	1060	-	476	-	1060	1060	-	194	-	248	350	1536	57.5	68	125.5
EV 20/12	15	160	1108	-	476	-	1108	1108	-	194	-	248	350	1584	59	68	127
EV 20/13	15	160	1156	-	476	-	1156	1156	-	194	-	248	350	1632	60.5	68	128.5
EV 20/14	15	160	1204	-	476	-	1204	1204	-	194	-	248	350	1680	62	68	130
EV 20/15	18.5	160	1252	-	542	-	1252	1252	-	238	-	317	350	1794	63	104	167
EV 20/16	18.5	160	1300	-	542	-	1300	1300	-	238	-	317	350	1842	64.5	104	168.5
EV 20/17	18.5	160	1348	-	542	-	1348	1348	-	238	-	317	350	1890	66	104	170

## DIMENSIONAL DRAWINGS

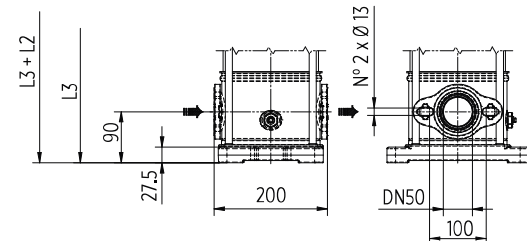
### F Version



Round flanges on body type PN25: the pump is supplied without counterflanges (Optional accessories, including bolts and joints)

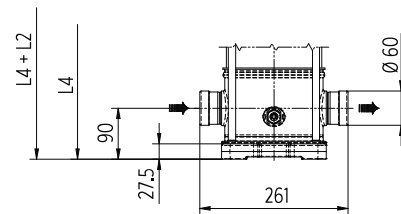
### T Version

Available from EV20/1 to EV20/10



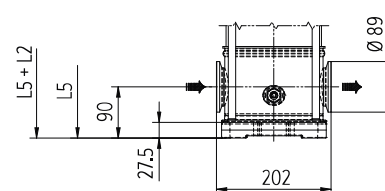
Oval flanges on body type PN16: the pump is supplied without threaded oval counter flanges (Optional accessories, including bolts and joints)

### V Version



Connections with rapid fittings type "Victaulic": the pump is supplied without the collars (Optional accessories)

### C Version

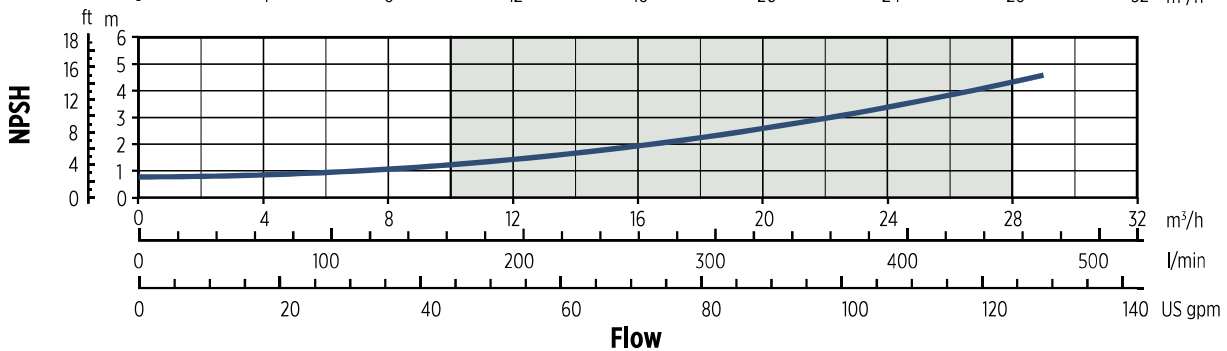
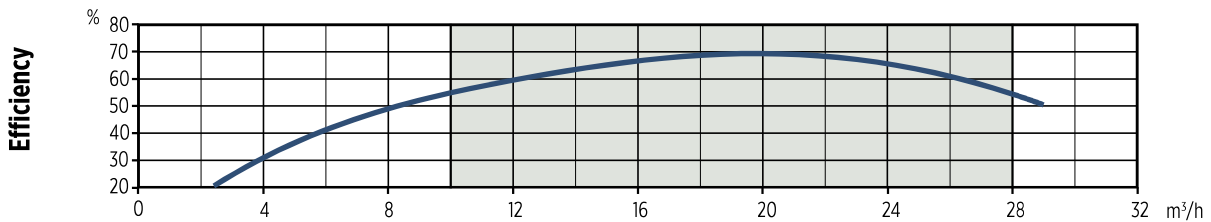
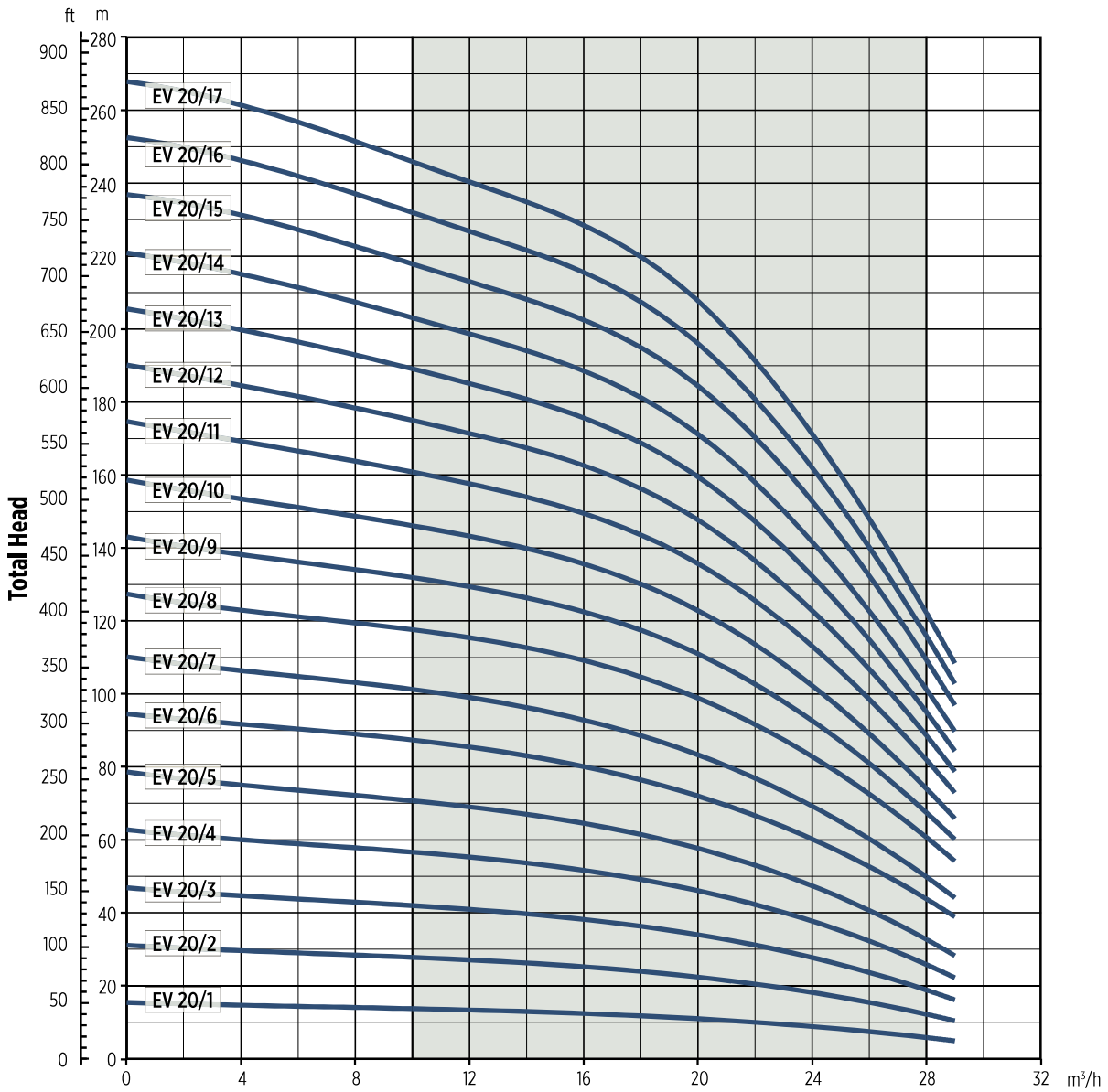


Connections with round fittings type Clamp-FlexiClamp: the pump is supplied without collars (Optional accessories)

0013002EN 02/2018

# EV 20 - PERFORMANCE CURVES AT 50 HZ

MEI ≥ 0,70



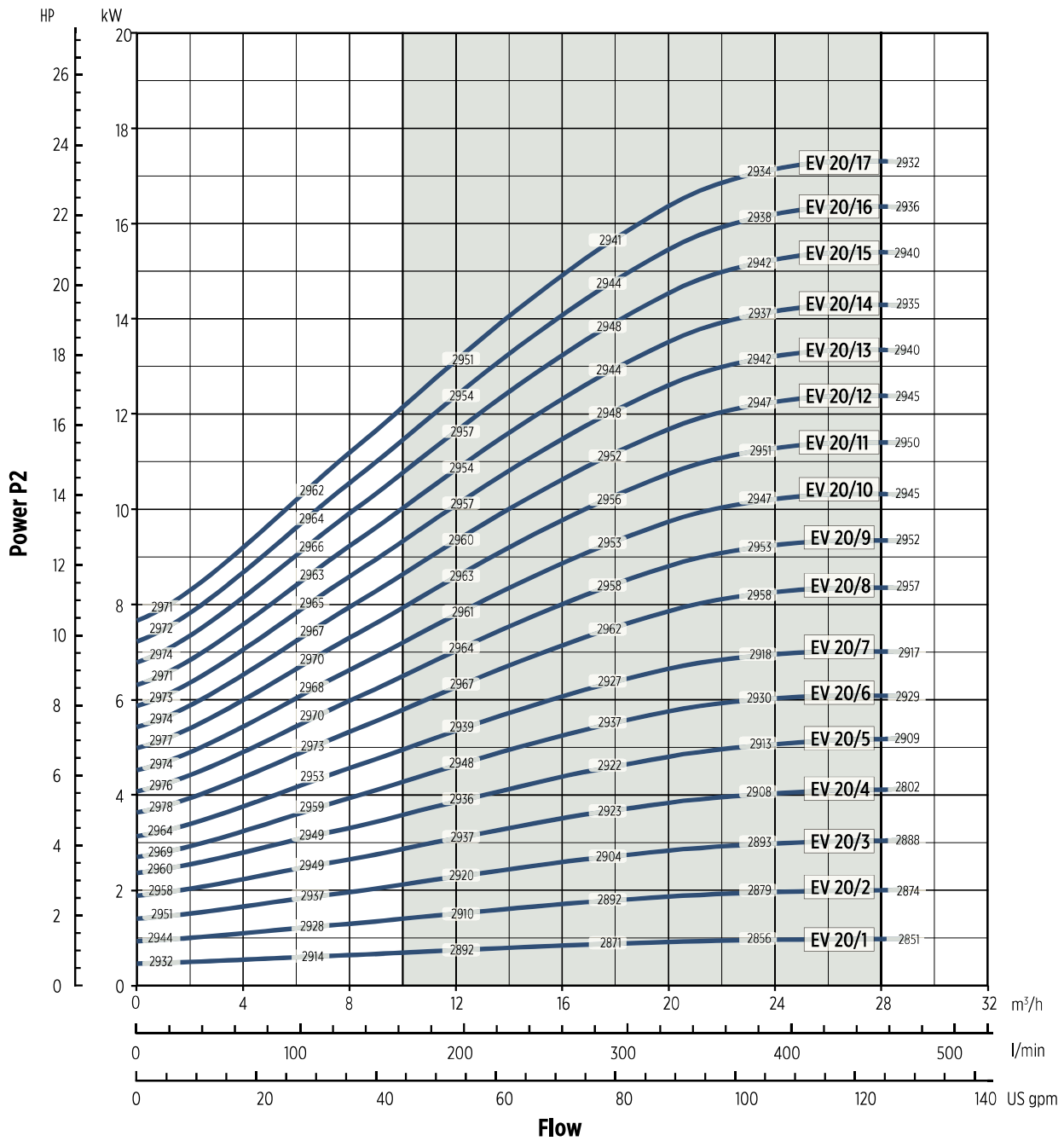
0012019EN 02/2018

The hydraulic characteristics are guaranteed, according to ISO Standard 9906:2012, grade 3B



# EV 20 - PERFORMANCE CURVES AT 50 HZ

MEI ≥ 0,70



0012019EN 02/2018

Performance curves of Q, H and P depend on the rpm number according to the following formula:

$$Q_2 = Q_1 \cdot \left(\frac{n_2}{n_1}\right), \quad H_2 = H_1 \cdot \left(\frac{n_2}{n_1}\right)^2, \quad P_2 = P_1 \cdot \left(\frac{n_2}{n_1}\right)^3, \quad \eta \text{ remains approximately the same.}$$

The rpm number related to the performance curves (Q-H-P) is indicated in the power chart.

Performance curves (Q-H-P) will change in case a motor with rpm number different from indicated values is used.

Q=Capacity, H=Head, P=Power, h=Efficiency