

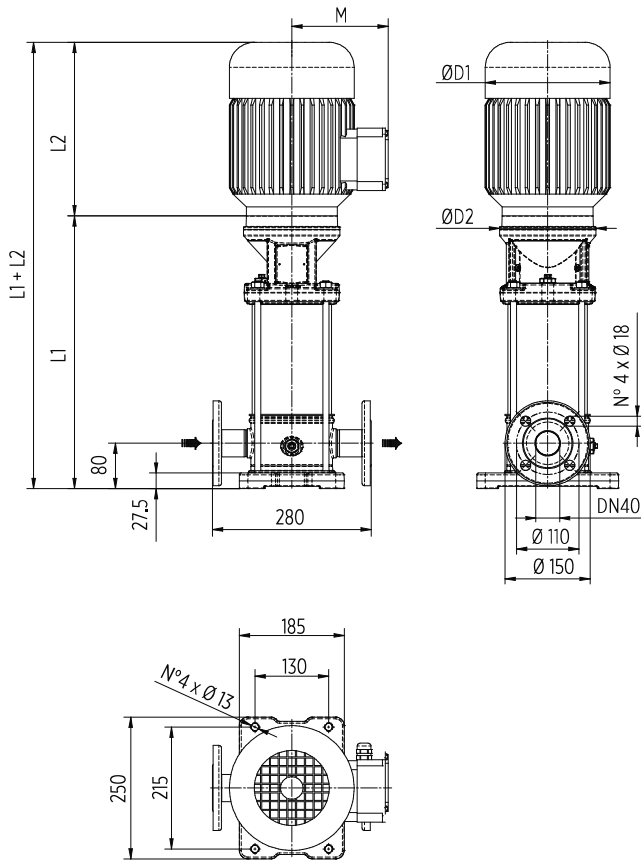
EV 10 - 50 HZ

TECHNICAL DATA

Pump Model	MOTOR		Dimensions [mm]													Weight [kg]		
			L1		L2		L3	L4		L5	M		D1		D2	L1+L2	Pump	Motor
	[kW]	Dim	F	1-PHASE	3-PHASE	T	V	C	1-PHASE	3-PHASE	1-PHASE	3-PHASE						
EV 10/2	0,75	80	341	232	232	341	341	341	150	129	160	160	170	573	13	9,5	22,5	
EV 10/3	1,1	80	371	232	232	371	371	371	150	129	160	160	170	603	14	11,1	25,1	
EV 10/4	1,5	90	411	267	267	411	411	411	160	138	180	180	170	678	15	14	29	
EV 10/5	1,5	90	441	267	267	441	441	441	160	138	180	180	170	708	15,5	14	29,5	
EV 10/6	2,2	90	471	267	267	471	471	471	160	138	180	180	170	738	16,5	16	32,5	
EV 10/7	2,2	90	501	267	267	501	501	501	160	138	180	180	170	768	17	16	33	
EV 10/8	3	100	541	-	306	541	541	541	-	145	-	196	170	847	18,5	22,8	41,3	
EV 10/9	3	100	571	-	306	571	571	571	-	145	-	196	170	877	19	22,8	41,8	
EV 10/10	4	112	601	-	306	601	601	601	-	145	-	196	170	907	19,5	26,5	46	
EV 10/11	4	112	631	-	306	631	631	631	-	145	-	196	170	937	20	26,5	46,5	
EV 10/12	4	112	661	-	306	661	661	661	-	145	-	196	170	967	21	26,5	47,5	
EV 10/13	4	112	691	-	306	691	691	691	-	145	-	196	170	997	21,5	26,5	48	
EV 10/15	5,5	132	926	-	328	926	926	926	-	160	-	225	300	1254	42,5	33,6	76,1	
EV 10/17	5,5	132	986	-	328	-	986	986	-	160	-	225	300	1314	43,5	33,6	77,1	
EV 10/19	7,5	132	1046	-	350	-	1046	1046	-	160	-	225	300	1396	45	36	81	
EV 10/21	7,5	132	1106	-	350	-	1106	1106	-	160	-	225	300	1456	46,5	36	82,5	
EV 10/23	7,5	132	1166	-	350	-	1166	1166	-	160	-	225	300	1516	47,5	36	83,5	
EV 10/24	11	160	1216	-	425	-	1216	1216	-	194	-	248	350	1641	50,5	59	109,5	

DIMENSIONAL DRAWINGS

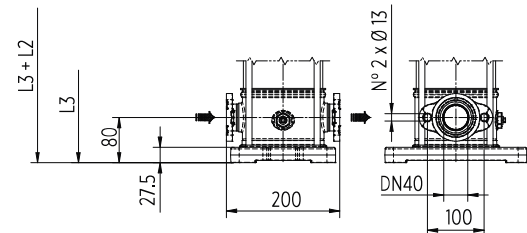
F Version



Round flanges on body type PN25: the pump is supplied without counterflanges (Optional accessories, including bolts and joints)

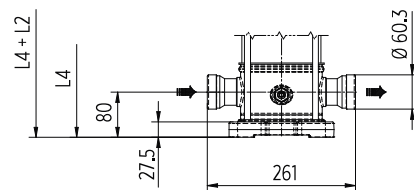
T Version

Available from EV10/2 to EV10/15



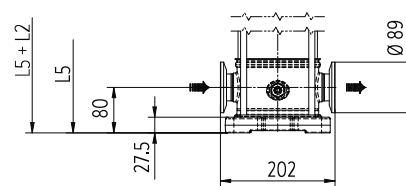
Oval flanges on body type PN16: the pump is supplied without threaded oval counter flanges (Optional accessories, including bolts and joints)

V Version



Connections with rapid fittings type "Victaulic": the pump is supplied without the collars (Optional accessories)

C Version

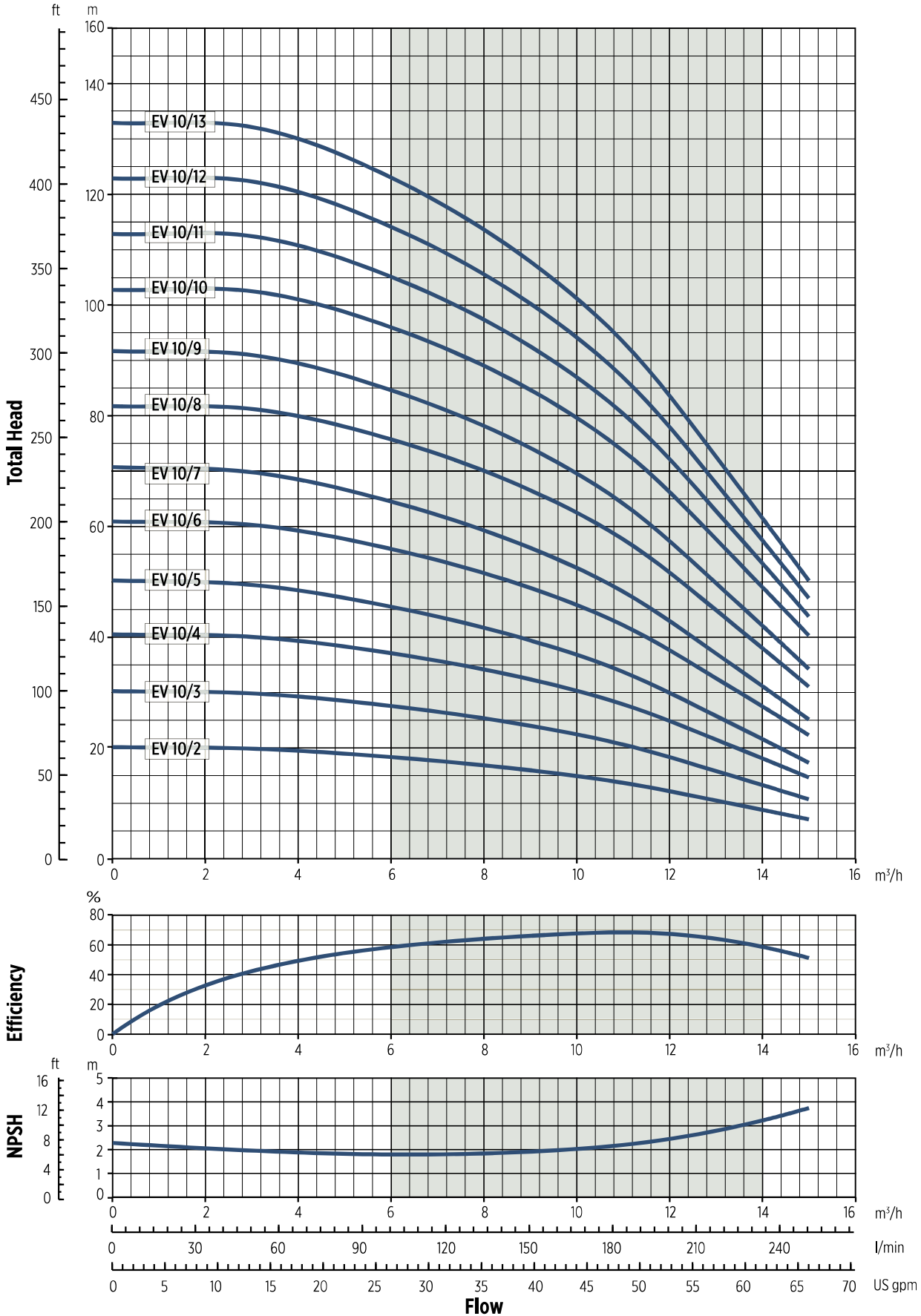


Connections with round fittings type Clamp-FlexiClamp: the pump is supplied without collars (Optional accessories)

00130101EN102/2018

EV 10 - PERFORMANCE CURVES AT 50 HZ

MEI ≥ 0,70



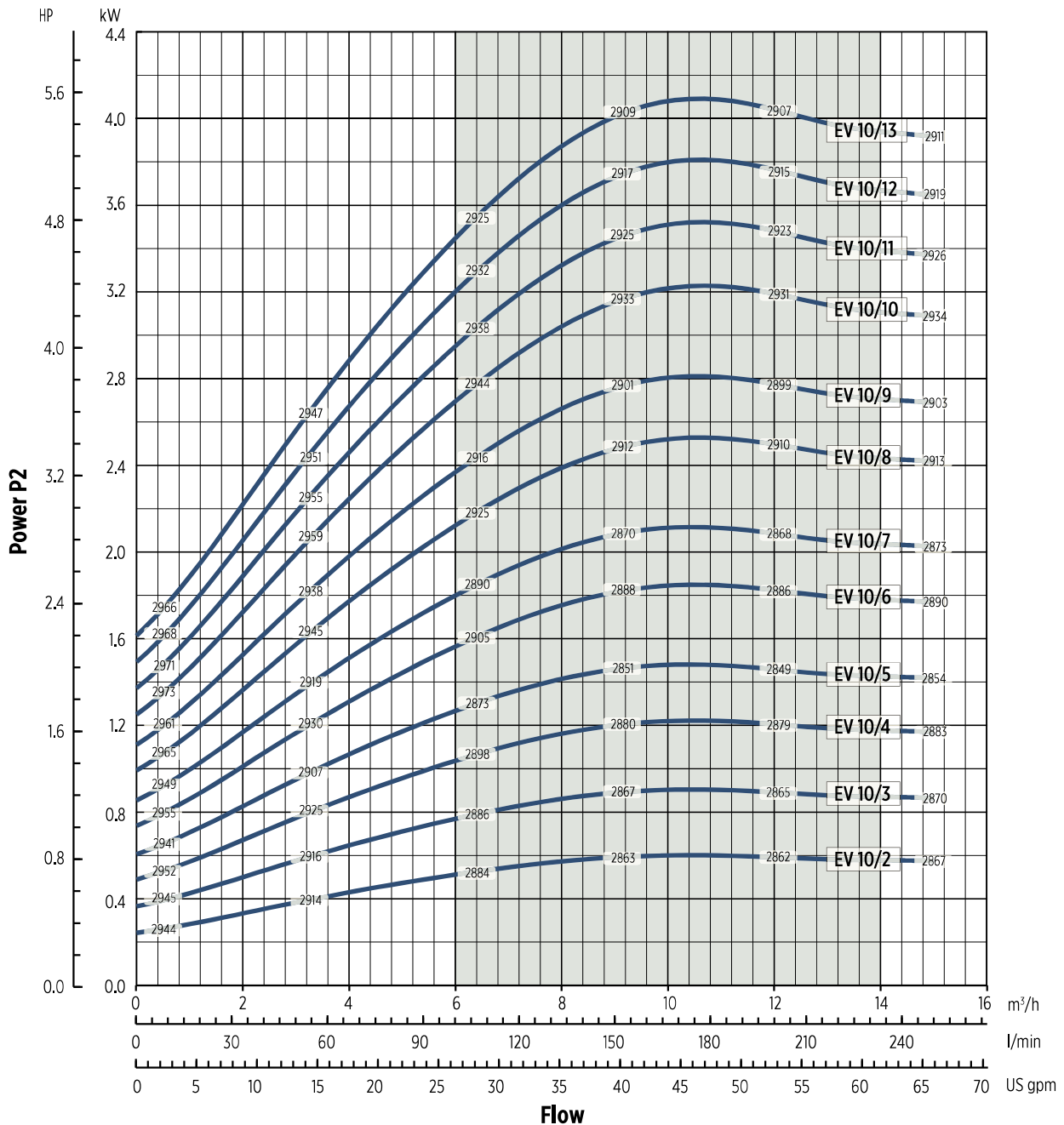
0012017AEN 02/2018

The hydraulic characteristics are guaranteed, according to ISO Standard 9906:2012, grade 3B



EV 10 - PERFORMANCE CURVES AT 50 HZ

MEI ≥ 0,70



0012011AEN 02/2018

Performance curves of Q, H and P depend on the rpm number according to the following formula:

$$Q_2 = Q_1 \cdot \left(\frac{n_2}{n_1}\right), \quad H_2 = H_1 \cdot \left(\frac{n_2}{n_1}\right)^2, \quad P_2 = P_1 \cdot \left(\frac{n_2}{n_1}\right)^3, \quad \eta \text{ remains approximately the same.}$$

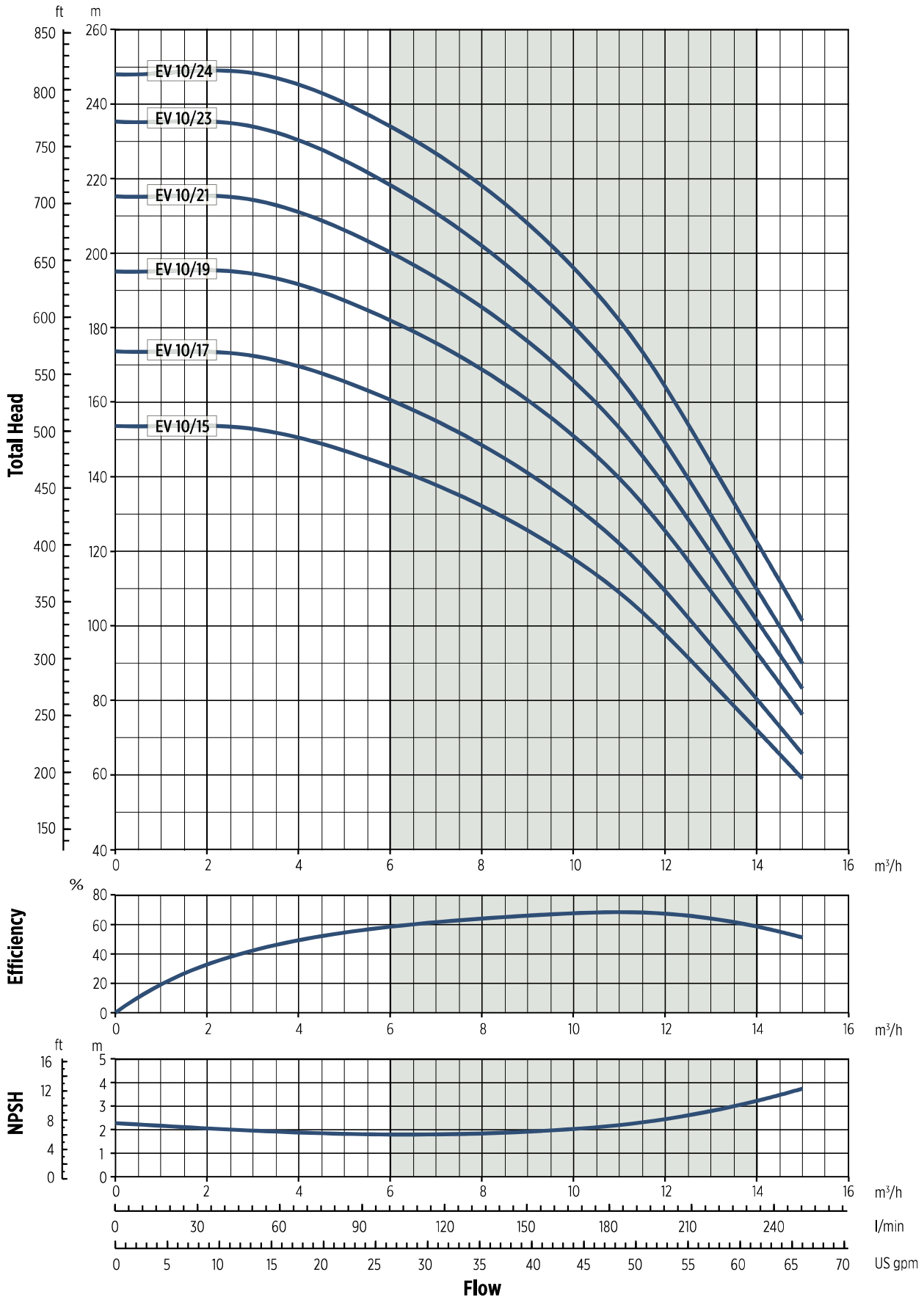
The rpm number related to the performance curves (Q-H-P) is indicated in the power chart.

Performance curves (Q-H-P) will change in case a motor with rpm number different from indicated values is used.

Q=Capacity, H=Head, P=Power, h=Efficiency

EV 10 - PERFORMANCE CURVES AT 50 HZ

MEI ≥ 0,70



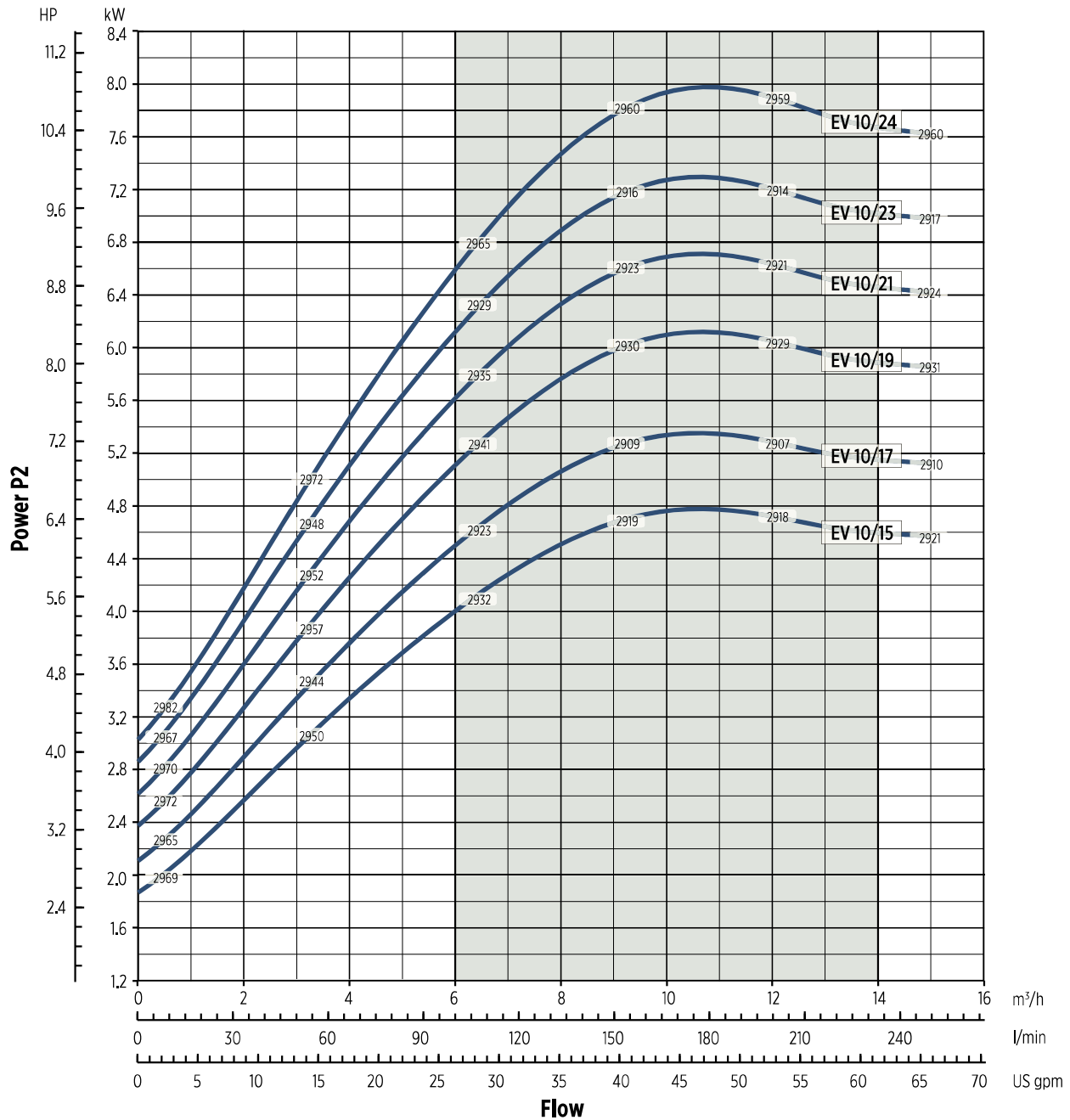
0012017BEN 02/2018

The hydraulic characteristics are guaranteed, according to ISO Standard 9906:2012, grade 3B



EV 10 - PERFORMANCE CURVES AT 50 HZ

MEI ≥ 0,70



0072017/BEEN 02/2018

Performance curves of Q, H and P depend on the rpm number according to the following formula:

$$Q_2 = Q_1 \cdot \left(\frac{n_2}{n_1}\right), \quad H_2 = H_1 \cdot \left(\frac{n_2}{n_1}\right)^2, \quad P_2 = P_1 \cdot \left(\frac{n_2}{n_1}\right)^3, \quad \eta \text{ remains approximately the same.}$$

The rpm number related to the performance curves (Q-H-P) is indicated in the power chart.
 Performance curves (Q-H-P) will change in case a motor with rpm number different from indicated values is used.
 Q=Capacity, H=Head, P=Power, η=Efficiency